

MODULE 3 L01

Pulmonary and Systemic Circuits

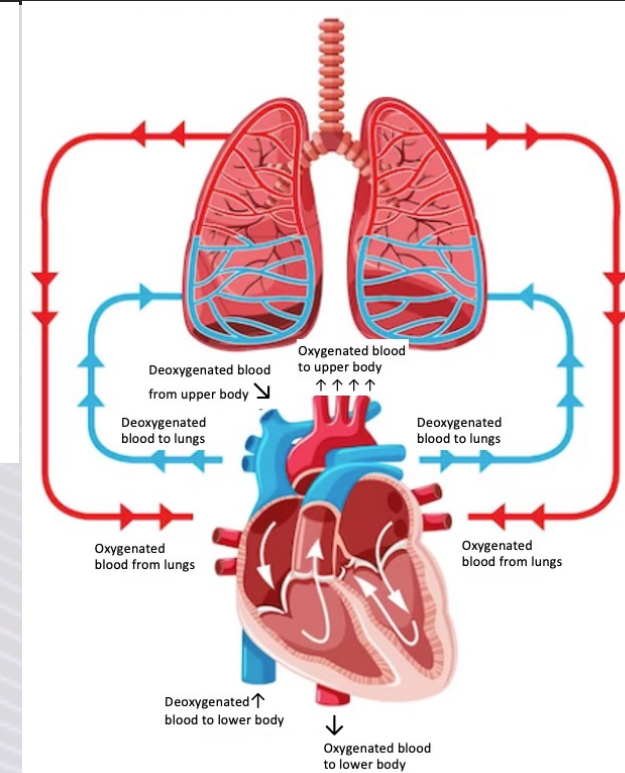
Dr. Lisa Brinn

lbrinn@fiu.edu



1. Pulmonary and Systemic Circuits

- Four chambers:
 - ❖ Atria
 - Right and left
 - ❖ Ventricles
 - Right and left



- Two circuits:

- ❖ Pulmonary circuit

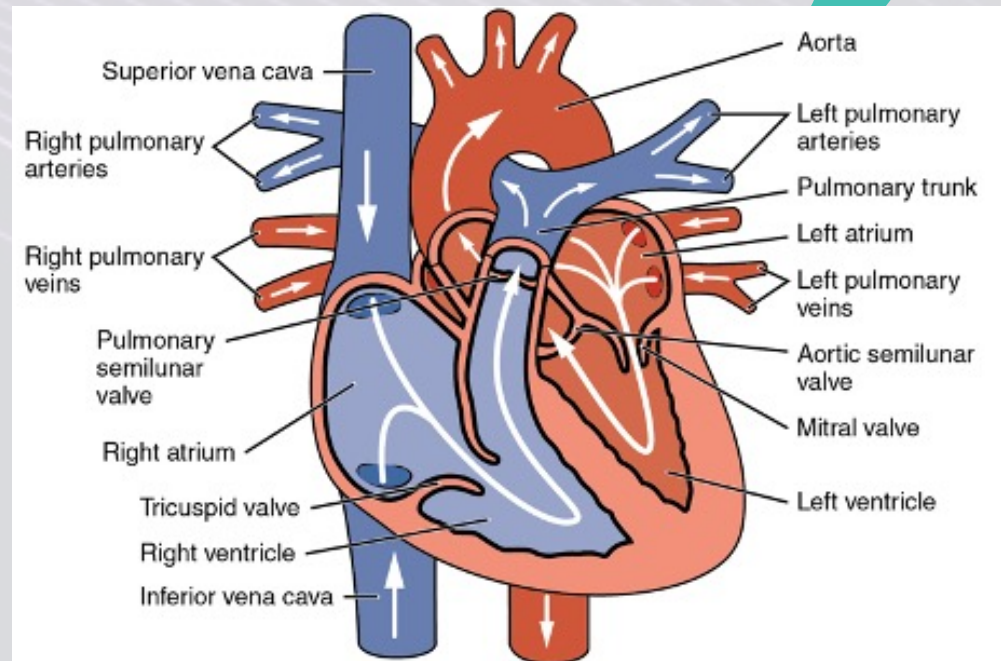
○ Heart $\xrightarrow{\text{CO}_2 \text{ rich-blood}}$ lungs $\xrightarrow{\text{O}_2 \text{ rich-blood}}$ heart

- ❖ Systemic circuit

○ Heart $\xrightarrow{\text{O}_2 \text{ rich-blood}}$ rest of the body $\xrightarrow{\text{CO}_2 \text{ rich-blood}}$ heart

Blood Circulation Within the Circuits

- Arteries:
 - ❖ Transport blood away from the heart
- Veins
 - ❖ Return blood to the heart
- Capillaries
 - ❖ Interconnect smallest arteries and veins
 - ❖ Known as exchange vessels



Major Blood Vessels

